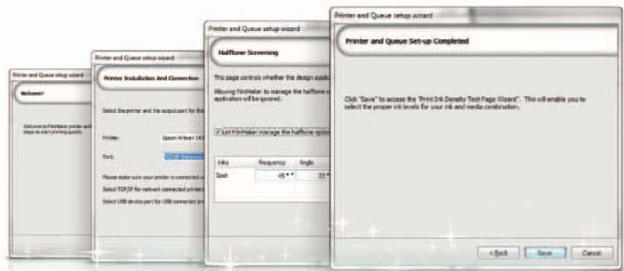


SCREENMAKER

RIP

OPTIMISED FOR
COMPUTER TO SCREEN

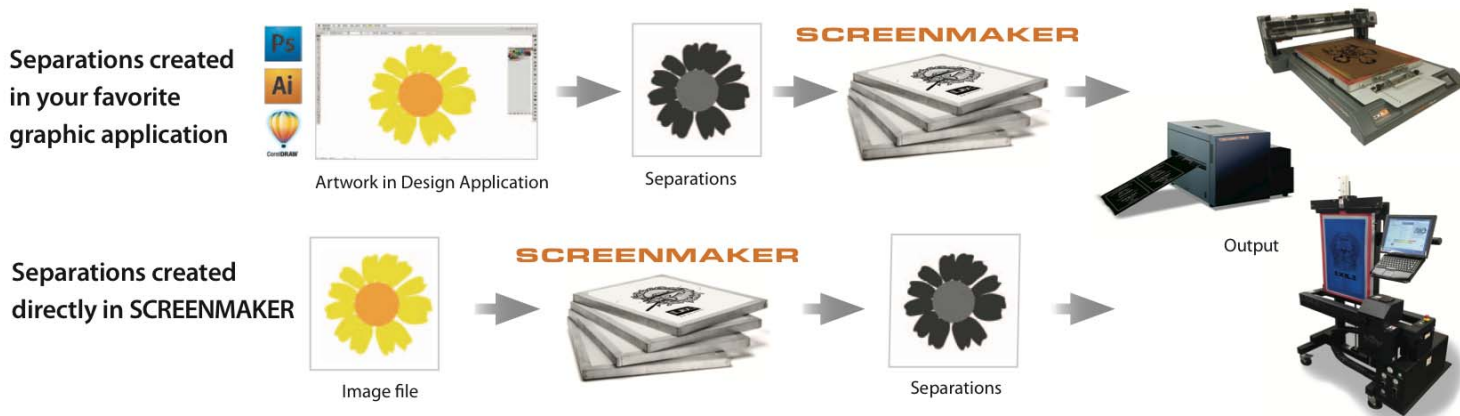


Easy to set-up, easy to use RIP software

Quick and easy device, ink and media setup. The printer and queue wizard will get you up and running in minutes without the need for any documentation. Further printing adjustments and customization can be completed afterwards using SCREENMAKER's advanced settings.

InRIP separations

Select your favorite workflow. SCREENMAKER provides the ability to separate files directly in the RIP. No need to purchase, learn and use secondary applications. Your choice!



Unmatched workflow support

Print Directly from Applications

Send jobs directly from graphics applications such as Corel™, Illustrator™ and PhotoShop™.



SCREENMAKER

Drag and drop files

Simply drag a saved file from your desktop directly onto the queue for processing.



Network printing support

Send jobs from Windows-based or Macintosh workstations to a designated hot folder which automatically forwards it to the appropriate queue for processing.



RIP

Preview, manage all production using Visual Production Manager

Simultaneous, multi-queue, multi-printer job management support.

Set up multiple queues that can all be easily viewed using VPM's tab system. Send jobs simultaneously to different queues that are set up with different screening parameters or different printers..

SCREENMAKER can process multiple jobs simultaneously.

The screenshot shows the Visual Production Manager (VPM) interface. It features a main window with several panels:

- Easy Access Multiple Queue Tabs:** Located at the top, showing tabs for different printer queues like 'Epson 4880 Separations', 'Epson Artisan 1430 Separations', and 'Epson S630 Separations Multi Black'.
- Print and Pending Job Organizer:** A table listing jobs with columns for Name, Status, Print Mode, and Copies. Jobs like 'Surfs Up.pdf', 'Dragon.eps', and 'Blues Festival.eps' are shown as 'Pending'.
- "On The Fly" Scheduling:** A callout box pointing to the 'Pending' status in the job list.
- Archived Jobs:** A separate table at the bottom showing jobs that have been completed, such as 'Flower Tote.eps' and 'Blues Festival.eps'.
- Job Preview:** A large central area showing a preview of a job page, including registration marks and crop marks.
- Selected Job Information, Crop/Registration Marks, Invert, Mirror and Halftone Settings:** A panel on the right side of the preview area with buttons for 'Crop Mark', 'Invert', and 'Mirror', and various settings for crop and registration marks.

Performance

Highest quality, precision screening

SCREENMAKER includes an advanced AM/FM screening algorithm. Jitter™ provides a simple, flexible way in which to modify halftone screens for exceptional print quality in mid-tones, gradients, shadows and highlights.



Advanced user print and production controls

Designed to make ease of use the top priority, SCREENMAKER also includes a large number of tools designed for more complex output requirements as well as for high volume production.

- Advanced, precision halftone controls
- Rotate/Scale/Mirror/Invert controls
- Page overlay view mode
- View raw data
- Nesting support
- Template function. Set up files with repeatable, exact positioning and custom nesting and imposition

Supported Printers



COMPATIBLE WITH:

Windows 8

Windows 7

Windows 10

SYSTEM REQUIREMENTS:

	MINIMUM	RECOMMENDED
CPU	Dual Core 2.0 Ghz or higher	Triple Core 2.0 Ghz or higher
HDD	500 GB	750+ GB
RAM	4GB	8GB